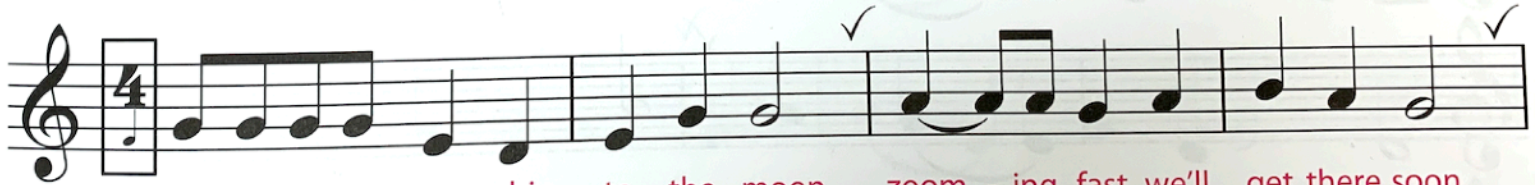
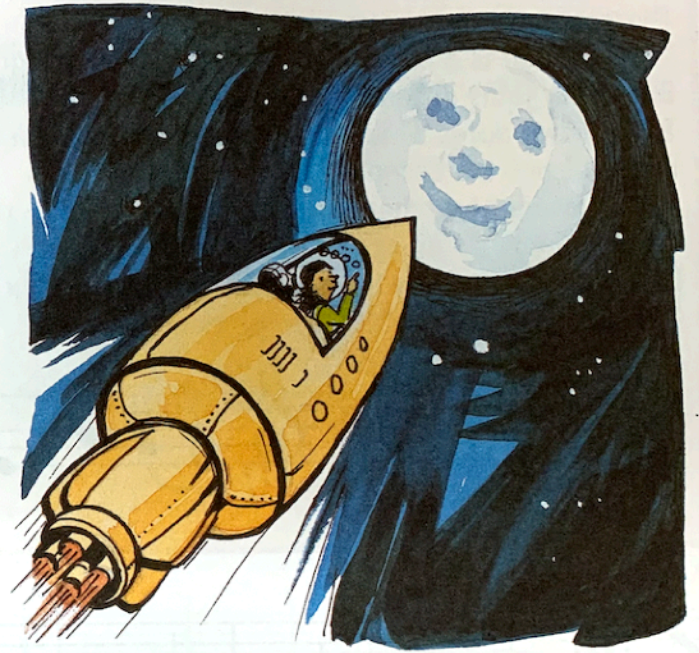


Cameron's Spaceship

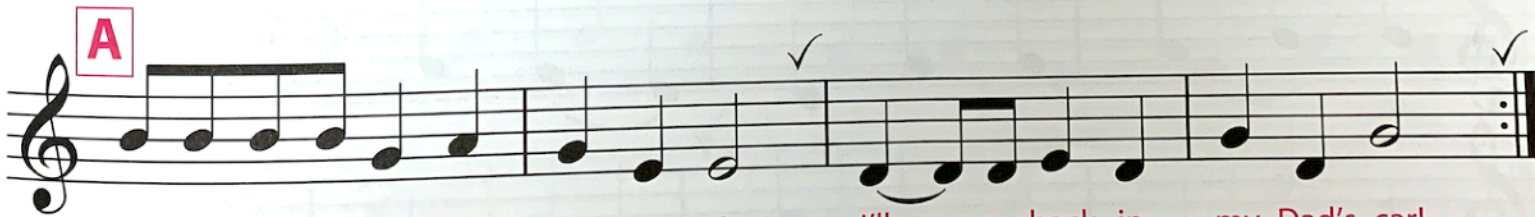
Can you play this tune without stopping at all? When you can, divide into two groups and play the tune as a **round**. One group starts first. When they have finished playing all the first line, the other group starts to play from the beginning. Each group stops when they have played the whole tune twice.

Class activity

A group of singers can be Group 1, with Recorders as Group 2.



Take me in your space-ship to the moon, zoom - ing fast we'll get there soon.



Bring me home a-gain if it's too far, I'll go back in my Dad's car!