

The next tune uses some **slurred** notes.

The slur sign is a curved line, rather like a tie sign.

But a **slur** joins different notes.

To play two notes which are slurred together, tongue the first note but not the second.

Keep blowing, but change the fingering to make the second note.

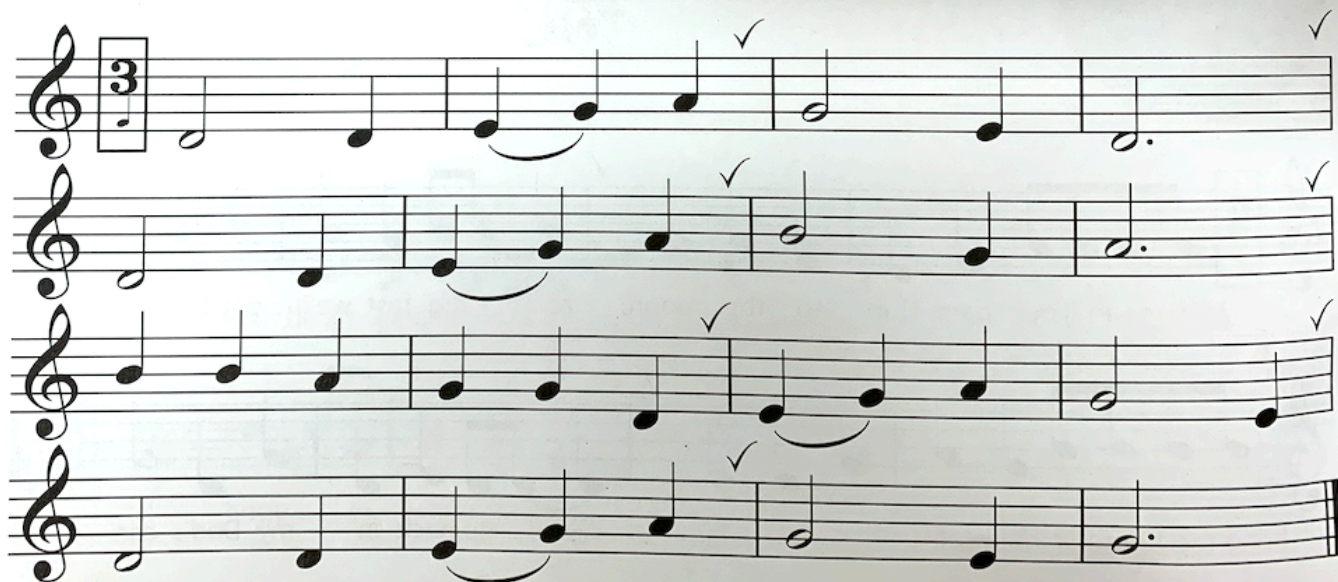
The slur joins different notes together smoothly.

Be careful not to mix up slurred notes and tied notes.

Practise these slurs which use parts of the tune.



Karen's Waltz



Now play *Adele's Waltz*.

Be careful with the slurs.

When you can play all the tune without any mistakes, you may read the special upside-down message!

Karen and Adele are twin sisters. Adele's Waltz is a special tune that fits with Karen's Waltz.
Divide into two groups and play both tunes at the same time.
Someone must count 1-2-3 so that both groups start exactly together.
When one tune fits with another tune, we call the music a **duet**.

Adele's Waltz

